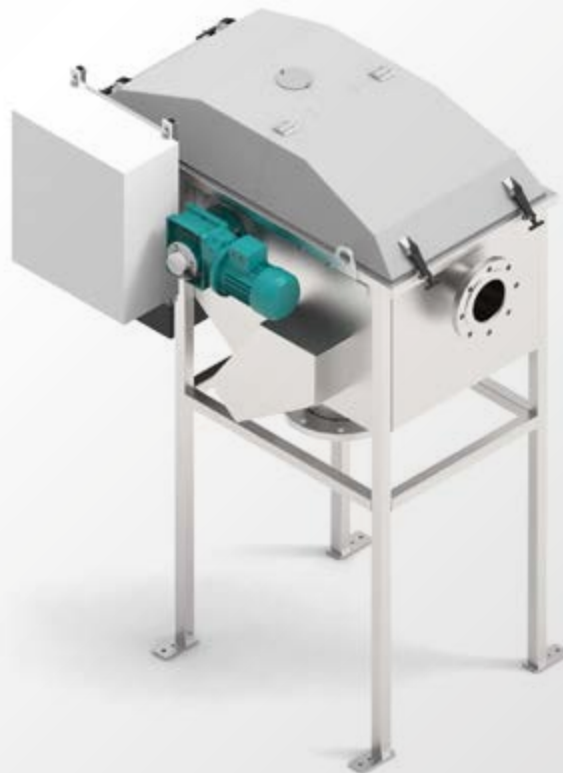




CIRCULAR BAR SCREEN “BUG”

THE BEST SOLUTION,
IF YOU THINK ABOUT
CLEAN WATER



ALL
FOR
WATER

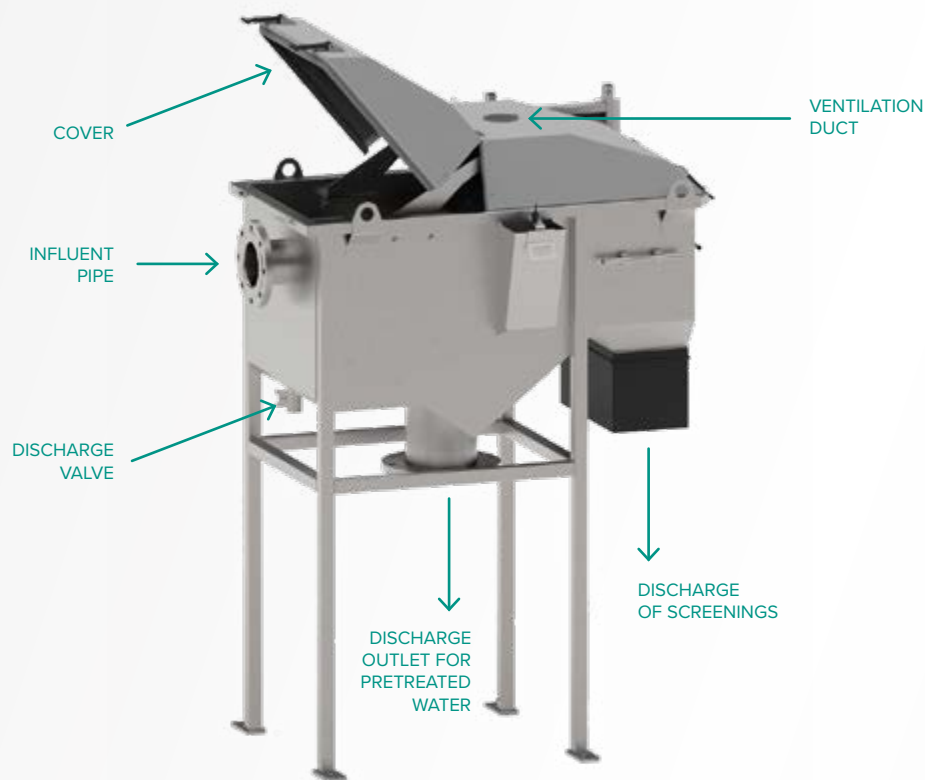
IN-EKO[®]
TEAM

CKP – a reliable and economical solution for fine wastewater pre-treatment

The Circular Bar Screen is designed for the pretreatment of wastewater, aiming to

remove solid impurities larger than 3 mm or 6 mm, up to a maximum size of 50 mm.

The device can be used in municipal wastewater treatment plants as well as in industry.



Design and properties of the Circular Bar Screen “BUG”

- Automatic control with respect of the quantity of the incoming waste water and suspended solids
- Presence of integrated emergency overflow bypass
- Controlled by timer or level probe
- Used only quality materials to ensure the highest standards in wastewater treatment technology
- Made of stainless steel AISI 304 / AISI 316

Optional accessories

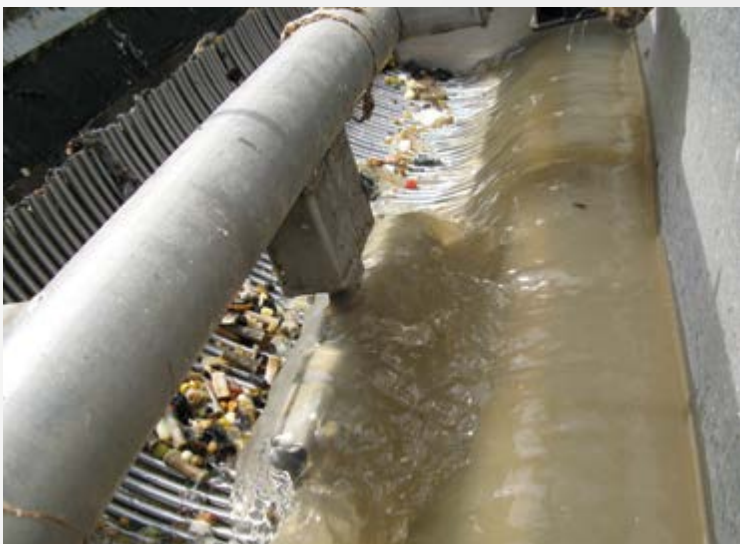
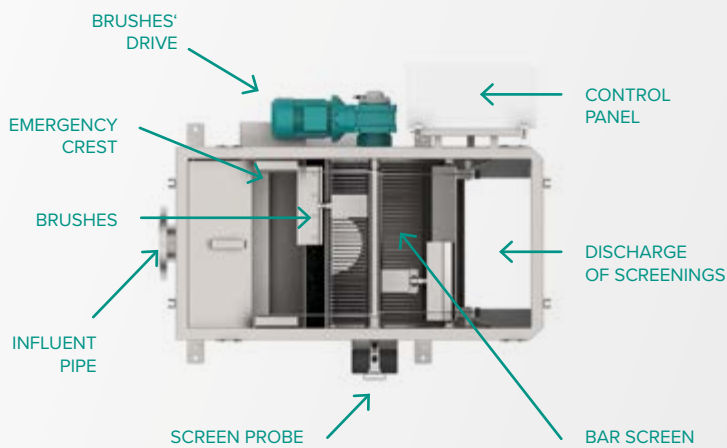
- Integrated press – dewatering of screenings
- Insulation and heating
- Design in plastic tub in case of pressure drainage
- Possibility of connection to plastic pipes

How does it work?

A Circular Bar Screen is a separation device designed to remove floating particles. Raw water with floating particles flows into the unit through an inlet pipe and passes through the bar screen. The water then flows through the screen, effectively separating the screenings.

The bar screen gradually traps the screenings, raising the water level at the screen's inlet. Once the switch-on level is reached, the probe activates, and the screen starts automatically. The screenings are conveyed by brushes to the discharge, where they are released into a bin/container

installed under the discharge. After the screenings are discharged, the water level in the unit drops, and the brushes deactivate. The screen gradually accumulates floating screenings, and the cycle repeats. The inflow of raw water is not interrupted during the entire process.



✓ The right choice

When choosing the optimum Circular Bar Screen unit size, the most important parameter is the maximal flow (Q_{max}) through the unit. Another parameter is the slot size of the screen. This is selected according to the size of the particles to be removed.

The operation of the Circle Bar Screen can be controlled by an electrical switchboard either in an economic version equipped with a time relay or in a higher class using a PLC, which allows advanced settings, control, and communication options.

+ Benefits for customers

- Not clogged with fats or other particles (such as fibrous material)
- High efficiency of pre-treatment
- Own emergency overflow bypass
- Tailor-made device manufacturing
- A reliable and economical operation
- No sharp edges – long lifespan of sweeping brushes
- Energy savings and reducing wear and tear on parts due to timer or level probe control
- The device can be put into the operation immediately after its installation
- Small footprint

Information about other devices in our complete product line of wastewater pretreatment and microfiltration can be found at www.in-eko.com.

You can contact us by phone, email or in person.



IN-EKO TEAM s.r.o. has specialized in the production of filtration and wastewater treatment units since 1995.